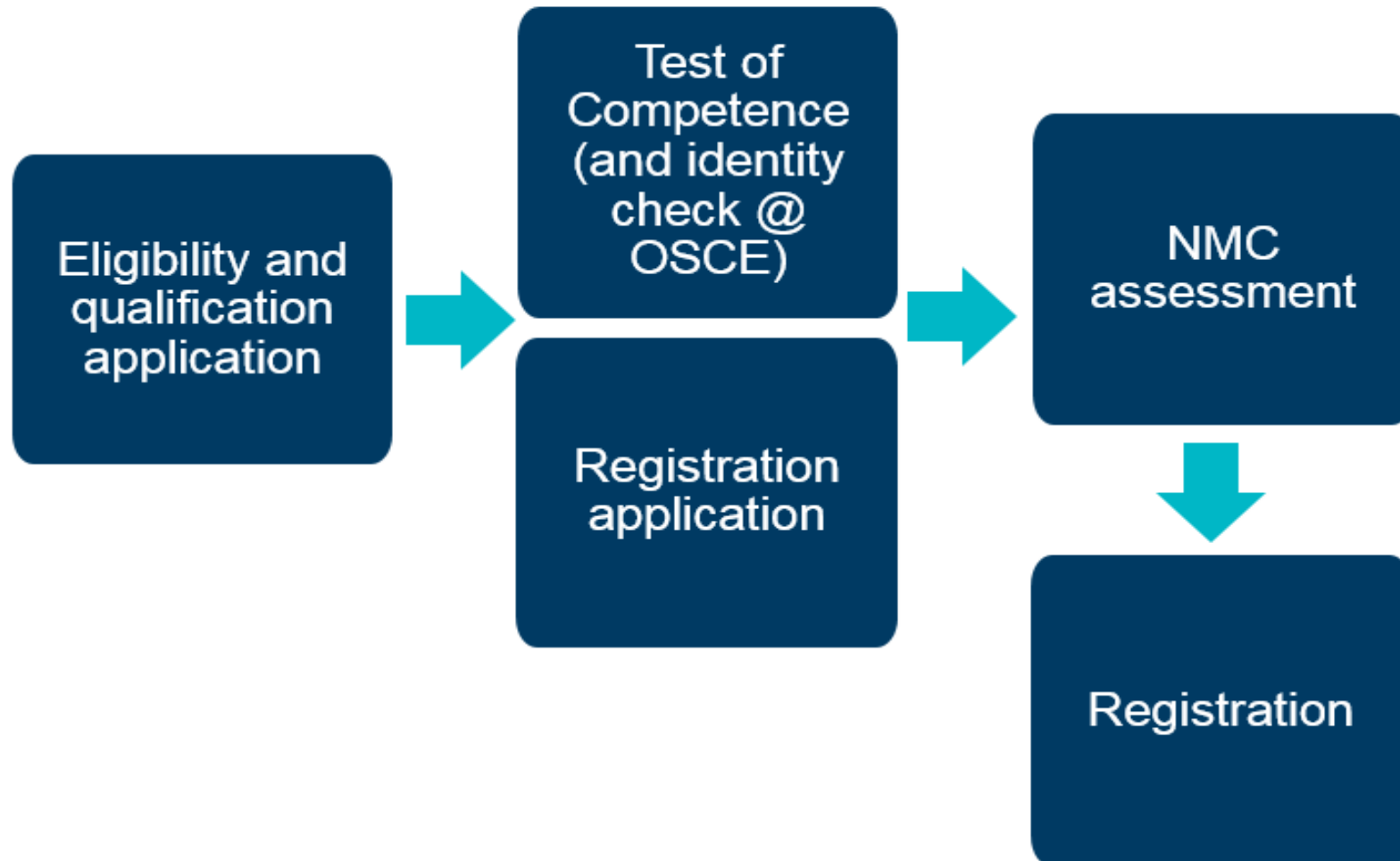


# Overview of Test of Competence

Jack Bland  
Head of Testing Services



# Where The Test Of Competence Fits Into The Overseas Registration Process



# International Registration: Registration requirements

## Identity

- Valid passport
- Evidence of name changes if relevant

## Qualification

- Qualification certificate
- Registration certificate if they've registered using their qualification
- Electronic verification to confirm eligibility

## Health

- Applicant declaration
- Supporting declaration from medical practitioner or occupational health department

## Language

- Approved language test (currently IELTS & OET)
- Pre-registration programme taught and examined in English
- Recent practice in an majority English speaking country

## Character

- Applicant declaration
- Supporting declaration from third party
- Police clearances/DBS

# New Test For Nurses And Midwives

We launched the new Test of Competence 2021 for nurses and midwives on 2 August 2021.

As well as reflecting our new standards for nurses and midwives, we've made some other changes to the new test:

The new CBT is split into **two** parts:

- **Part A will cover numeracy**
- **Part B will cover clinical questions related to nursing or midwifery.**

The **new OSCE has 10 stations** (rather than 6) to assess additional skills as well as the candidate's values and behaviours, and evidence-based practice.

# What does it involve?

You will need to take a test that's specific to the part of the register you're applying to join or re-join. These are:

- Adult Nurse (RNA)
- Mental Health Nurse (RNMH)
- Learning Disabilities Nurse (RNLD)
- Children's Nurse (RNC)
- Midwifery (RM)
- Nursing Associate (NAR)

# How Long is it Valid For?

You must pass the CBT and OSCE within **two years** of each other.

You can sit your CBT or OSCE in any order, but you need to complete both parts to continue with your application for initial registration or readmission.

Once you have successfully passed both the CBT and OSCE, your ToC will remain valid for five years.

# OSCE

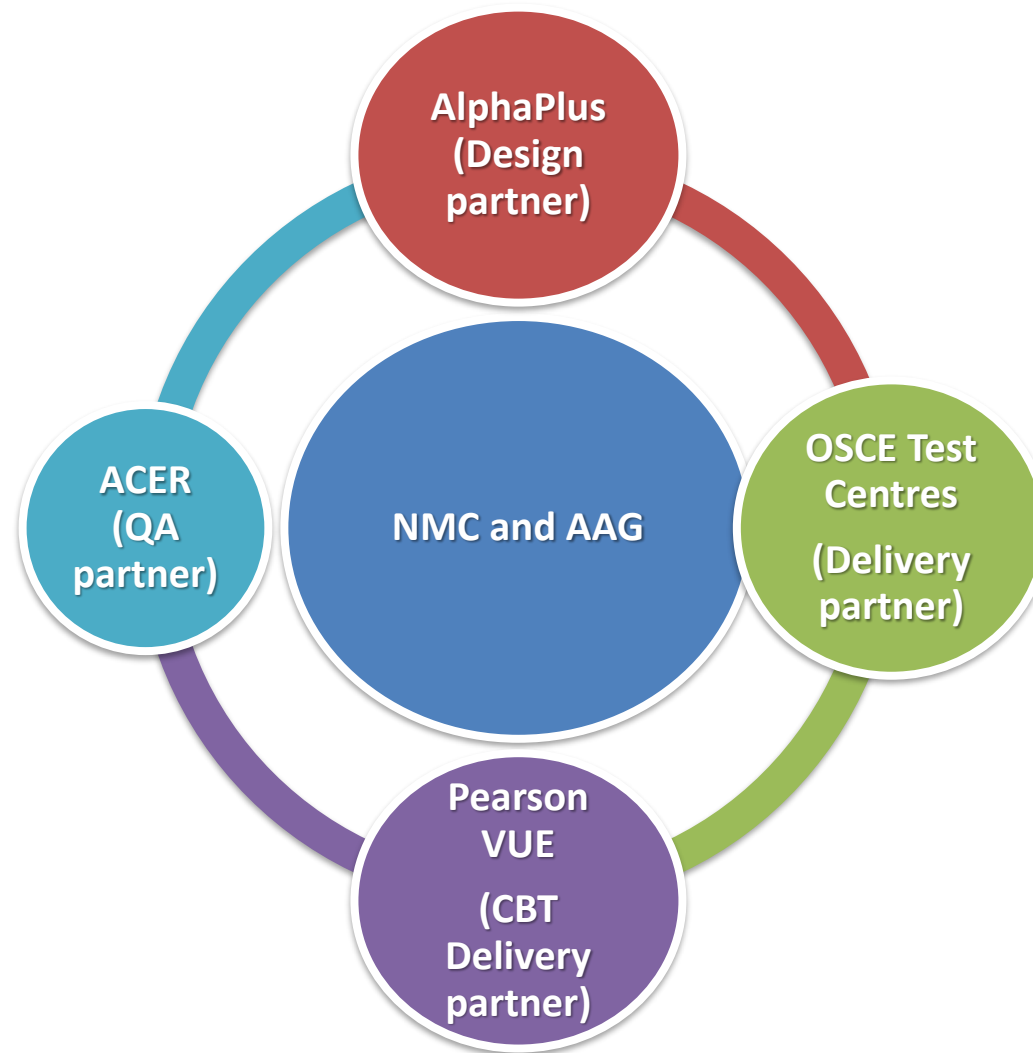
## Objective Structured Clinical Examination

# Booking your OSCE/Contacts

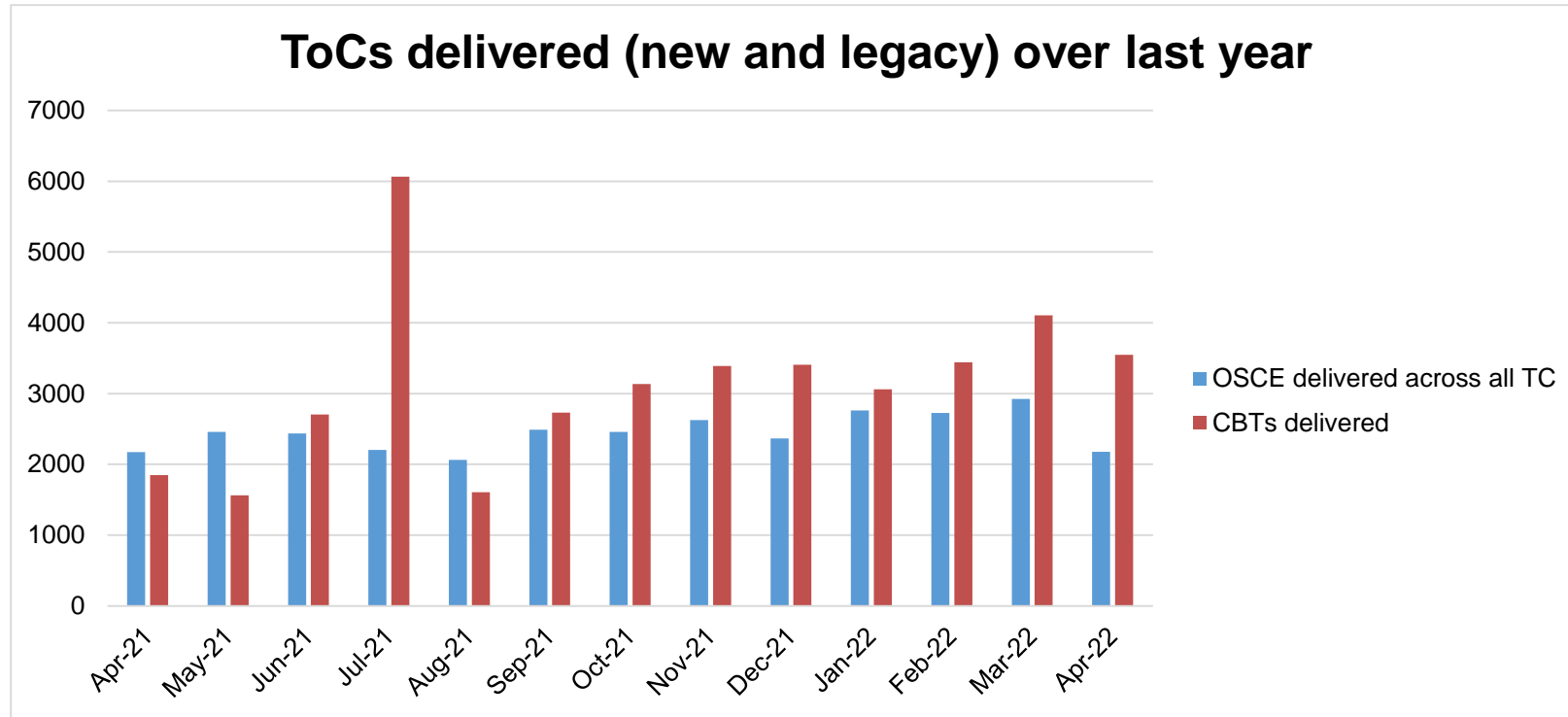
	Northampton	Oxford Brookes	Ulster	Northumbria	Leeds
	Michelle Thompson  Email: <a href="mailto:Michelle.Thompson@northampton.ac.uk">Michelle.Thompson@northampton.ac.uk</a>	Barry Ricketts  Email: <a href="mailto:bricketts@brookes.ac.uk">bricketts@brookes.ac.uk</a>	Nicola Robertson  Email <a href="mailto:Nicola.robertson@nhs.scot">Nicola.robertson@nhs.scot</a>	Norman Franklin  Email: <a href="mailto:norman.d.franklin@northumbria.ac.uk">norman.d.franklin@northumbria.ac.uk</a>	Adam Tucker  Email: adam.tucker2@nhs.net



# Current OSCE Delivery Partners



# ToC delivered over the past 12 months



	Apr-21	May-21	Jun-21	Jul-21	Aug-21	Sep-21	Oct-21	Nov-21	Dec-21	Jan-22	Feb-22	Mar-22	Apr-22	Total
OSCE delivered across all TC	2171	2460	2437	2204	2061	2489	2456	2625	2364	2761	2727	2924	2176	<b>31,855</b>
CBTs delivered	1848	1562	2702	6066	1605	2731	3134	3387	3407	3058	3441	4105	3549	<b>40,595</b>

# Any Questions?



# NMC OSCE TEST OF COMPETENCE

**Carol Dodimead**

Assistant Academic  
Lead

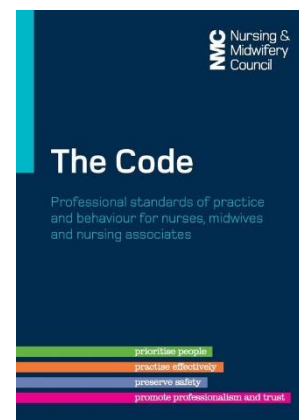
NMC Competency  
Test Centre

Oxford Brookes  
University



# OSCE Mapped Against Standards of Proficiency for Nurses and Midwives

## 10 Station OSCE

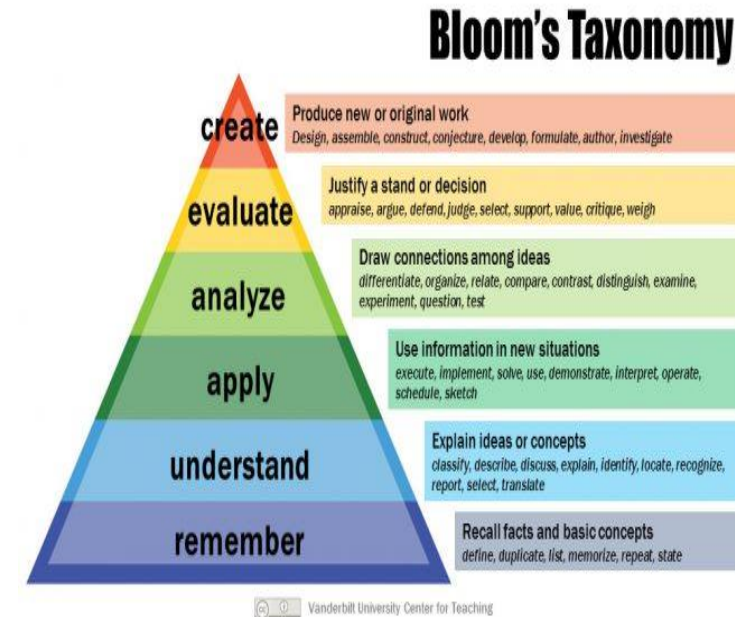


# OSCE DESIGN

Provides a holistic and realistic focus on assessment of performance.

Represents the complex demonstration, application and synthesis of care delivery required from a registered nurse in the relevant field of practice.

Stations do not generally include test items that operate below the Bloom's taxonomic level of analysis and evaluation.



## Example of Marking Criteria- Removal of Urinary Catheter

1	Explains the procedure to the person and informs them of potential post-catheter symptoms, such as urgency, frequency and discomfort, which are often caused by irritation of the urethra by the catheter.
2	Assembles the equipment required.
3	Cleans hands with alcohol hand rub, or washes with soap and water and dries with paper towels, following WHO guidelines.
4	Dons a disposable plastic apron and non-sterile gloves.
5	Having checked volume of water in balloon (see patient documentation), uses syringe deflate balloon in full.
6	Asks person to breathe in and then out. As person exhales, gently but firmly with continuous traction removes catheter.
7	Cleans and dries area around the genitalia and makes the person comfortable.
8	Encourages person to exercise and to drink 2.5 litres of fluid per day.
9	Disposes of equipment including apron and gloves appropriately – verbalisation accepted.
10	Cleans hands with alcohol hand rub, or washes with soap and water and dries with paper towels following WHO guidelines – verbalisation accepted.
11	Verbalises asking the patient to inform the nurse when urine has been passed.
12	Acts professionally throughout the procedure in accordance with NMC (2018) 'The Code: Professional standards of practice and behaviour for nurses, midwives and nursing associates'.

## Professional Values and Evidence Based Practice

Silent Written Stations, 10 minutes each

Mock Examples & Marking Criteria  
available in public domain

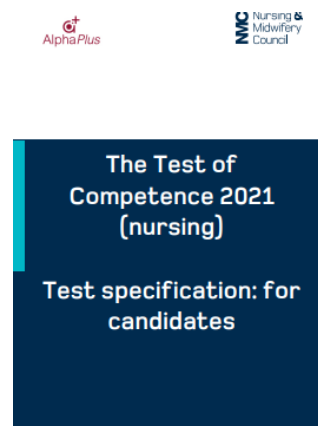
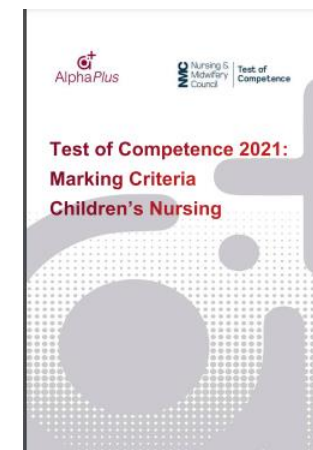
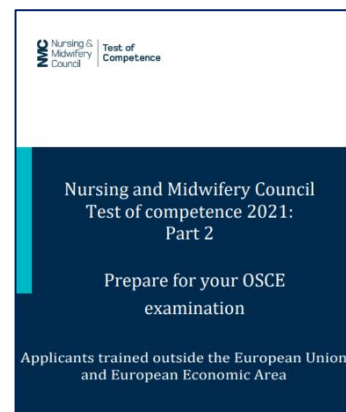
Assessing Candidate's Professional  
Values, mapped against NMC Code and  
Standards, e.g. Dignity, Respect, Choice,  
Kindness, Compassion

Assessing Candidate's ability to assess  
and apply research findings / lessons from  
data & reports to support women's  
informed decision making





# Supporting Nurses and Midwives with TOC



Any questions...



THANK YOU

